



Achieving more together



Ormiston Academies Trust

About us

OAT is a not for profit sponsor of primary and secondary academies. Ormiston academies share the Ormiston Academies Trust ethos of ensuring every child reaches their full potential; being aspirational and committed to academic excellence and being supportive yet courageous in our approach.

Ormiston has been an academy sponsor since 2006, expanding from 4 to 30 schools over the past five years. The OAT group of schools is well balanced, with an appropriate number of good and outstanding schools to support other schools in the chain.

OAT academies benefit from the Trust's expertise from both the private and public sectors. OAT has great school improvement capacity, with the senior team including NLEs and a former primary head and senior HMI. OAT places a premium on leadership and has five ex-head teachers as directors; two of whom held senior positions at the National College for School Leadership and have been at the forefront of setting up Teaching Schools.

Background

Our founder, Peter Murray, created the charity Ormiston Trust in memory of his sister Fiona Ormiston Murray. Fiona loved children but was denied the chance to have her own when she was killed in a tragic car accident on her honeymoon.

In her name, OAT works with schools and local communities all over the country to give young people access to an excellent education.



“OAT is already a very successful academy sponsor but we are determined to become the Trust that makes the biggest difference.”

Professor Toby Salt, Chief Executive

OAT services

Your school is unique, and as an OAT academy you retain that distinctive identity. But you can also:

- Build on your current strengths and preserve your core values.
- Use your greater independence to use your assets and resources more efficiently.
- Trade expertise within the group.
- Share resources and withstand unforeseen pressures.
- Draw on a network of senior leaders, teachers, consultants and governors to add capacity to your team when needed.

You can strengthen key areas with dedicated school improvement support including:

- Personal challenge and support from a highly qualified education advisor.
- An annual review led by trained Ofsted inspectors.
- Specialist consultancy days.



Since Matley Primary School became part of the Ormiston family as Ormiston Meadows Academy, its relationship with local secondary Ormiston Bushfield Academy (OBA) has gone from strength to strength. Ormiston Meadows pupils attend a range of workshops and master classes in various subjects, and OBA staff deliver English and maths to Year 6 high ability students.

OAT services

Strategic support in finance, HR, governance, ICT, buildings and maintenance, PR and marketing ensures you can focus on running your school at its best.

Hands on support includes:

- Termly visits to support your business manager/bursar.
- Internal audits by qualified accountants.
- Regular forums for finance and HR.
- Access to national staff development programmes including Teaching Leaders and Future Leaders.
- 24-hour emergency helpline support for media enquiries and crises.
- Building condition surveys and professional support to bid for extra building funding.
- ICT and utilities reviews and procurement to save you money.
- Strategic support for struggling governing bodies, including setting up an Interim Executive Board.
- Access to legal and HR support line.

You'll never be alone:

OAT gives you access to
legal and HR support lines
and a 24-hour media helpline



Working with OAT



“We originally approached OAT to sponsor our school because of the first-hand experience we had of seeing the transformation at our local OAT secondary academy. The history of OAT and its genuine link to improve the life chances of children who face disadvantages resonated with governors and myself. We felt that this was a provider who genuinely wanted to support communities.”

OAT was able to provide evidence of the way in which they had successfully supported schools. They have a clear emphasis on developing the capacity of the school community, respectfully supporting empowerment by developing what was already established.”

[Kate Rutherford, Principal, Ormiston Herman Academy](#)

“As a new principal I have really valued the support OAT has given me. From detailed evaluative support from our Primary Education Advisor to up to date and informative HR and PR advice from Head Office, OAT has supported our academy’s growth and development every step of the way.”

While each of the primary academies in the OAT family has unique characteristics, the mutual support we are able to give one another through the OAT network is invaluable and has already led to significant school improvement.”

[Jane Nolan, Principal, Ormiston South Parade Academy](#)

Key Stage 2 results

This year OAT primary academies celebrated their best ever KS2 results with a leap of over 20 percentage points from the 2012 results. 76% of pupils achieved at least level 4 in reading, writing and maths.

All three OAT primary academies have seen a significant increase on their results from last year, and are achieving well above the government's floor standard of 65%.

86% of students at [Ormiston Herman Academy](#) in Gorleston, Norfolk gained a level 4 or above at KS2, a rise of 6 percentage points from last year's results. The academy was recently recognised for its good work when it appeared in a special feature on the transformative effect of state schools by *BBC Look East*.

70% of pupils gained level 4 grades in reading, writing and maths at [Ormiston Meadows Academy](#) in Peterborough, a 2 percentage point increase from last year.

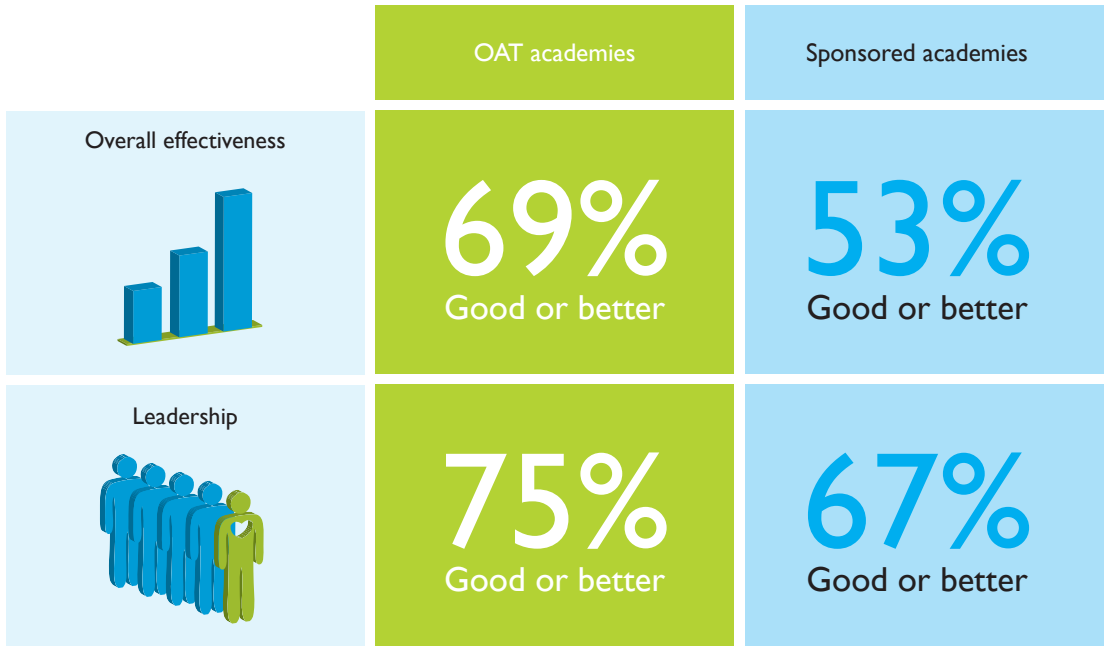
[Ormiston South Parade Academy](#) in Grimsby saw the biggest percentage increase with a 10 point rise from last year's results, with 72% of pupils achieving level 4 grades in reading, writing and maths this year.

Professor Toby Salt, CEO of Ormiston Academies Trust said: "We are delighted with the results from our primary academies, who have put a lot of hard work into these achievements. This gives our pupils a strong foundation from which to enter secondary school. Working with primaries is a very important way to achieve long term improvement in education, and OAT is looking forward to expanding its work in the primary sector."



Our Ofsted results

The OAT network is well balanced, with an appropriate number of good and outstanding academies to support other academies in the chain. We expect every academy to be aspirational and to strive for academic excellence.



Speak to a Trust that...

- Empowers and supports you to build on your strengths
- Doesn't impose changes on your ethos, or uniform
- Works for charitable purposes and is not for profit
- Supports your local community
- Provides support in all areas throughout consultation and conversion

“The teams of people that we worked with in the transition process were incredibly supportive and systematic.”

[Kate Rutherford, Principal, Ormiston Herman Academy](#)



Birmingham office: Ormiston House, 144 Newhall Street, Birmingham B3 1RY | Tel: 0121 236 5100

London office: 112A Shirland Road, London W9 2BT | Tel: 0207 266 7470

Southern office: Unit 10, Chilgrove Business Centre, Chilgrove, Chichester PO18 9HU | Tel: 01243 885 630